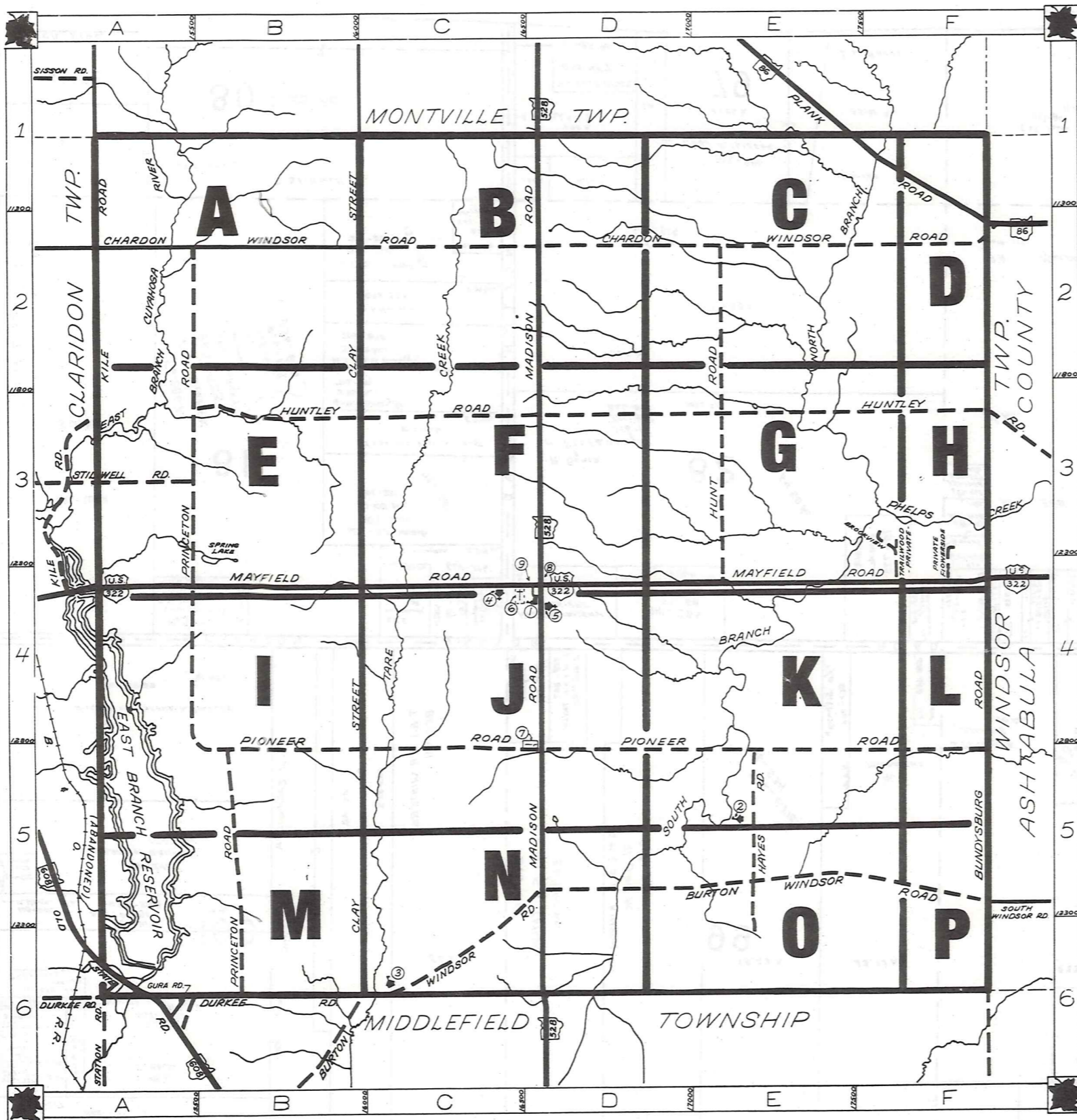


# ROAD INDEX



--- UNPAVED ROADS  
 --- TOWNSHIP LINE  
 --- PAVED ROADS  
 --- COUNTY LINE

**A** ... INDICATES MAP PAGE  
 --- ... INDICATES MAP PAGE BOUNDARY

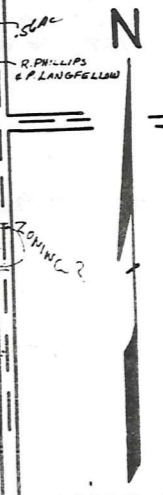
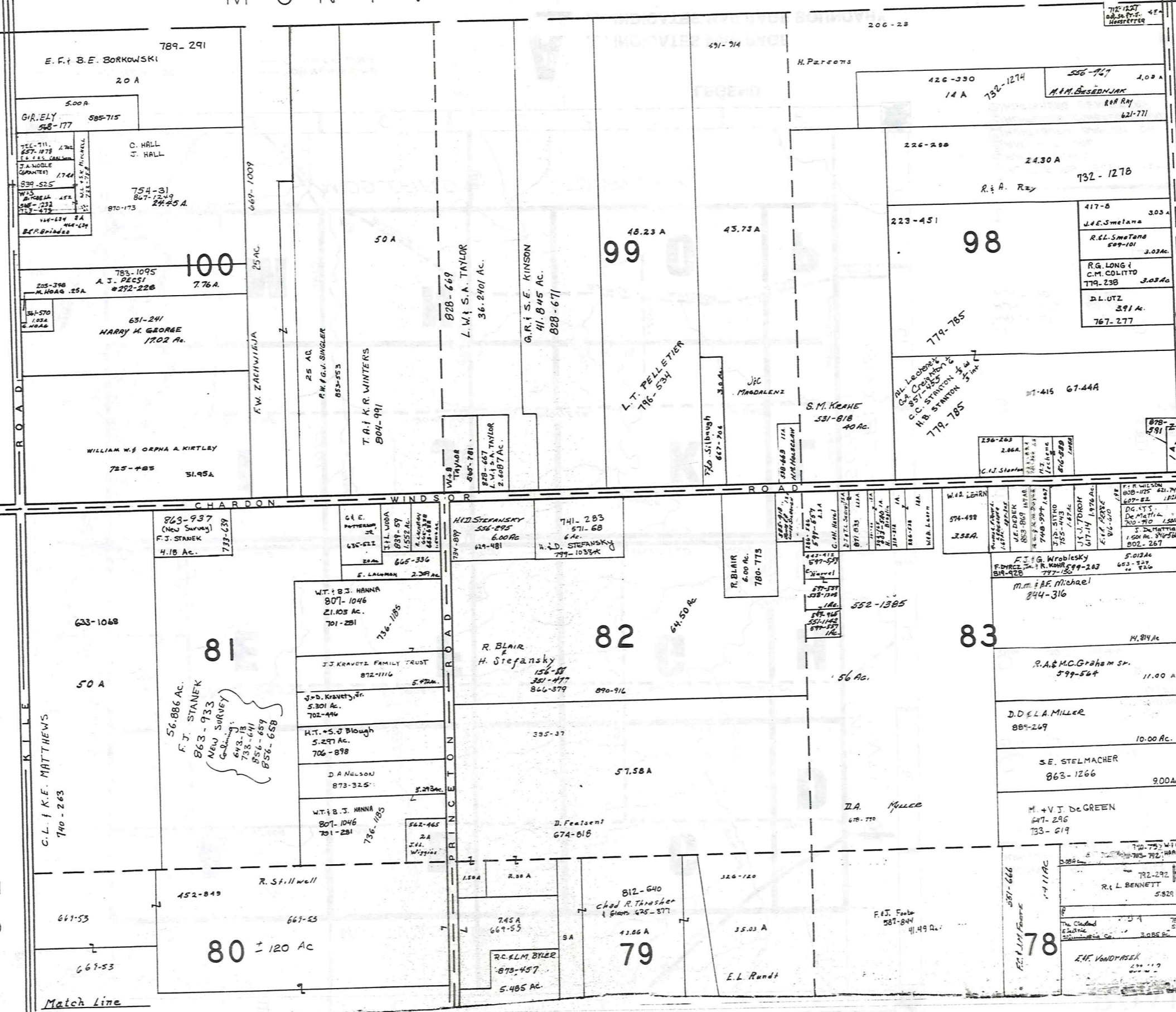
A	J	S	STILLWELL RD. A3
B	K	T	TRAILWOOD RD. F4
BROOKVIEW RD. F3	KILE RD.	AI-A4	
BUNDYSBURG RD. F4-F6			
BURTON WINDSOR RD. C6-F5			
C	L	U	
CHARDON WINDSOR RD. A2-F2			
CLAY STREET B1-B6			
	M	V	
	MADISON RD. D1-D6		
	MAYFIELD RD. A4-F4		
D		W	
DURKEE RD. A6-B6			
	N	X	
E		OLD STATE RD. A6	
	O	Y	
F		Z	
FLOWERSIDE RD. F4			
	P		
	PIONEER RD. B5-F5		
	PLANK RD. E1-F2		
	PRINCETON RD. B2-B6		
H	Q		
HAYES RD. E5			
HUNTLEY RD. B3-F3			
HUNT RD. E2-E4			
	R		
I			
① HUNTSBURG ELEM. SCHOOL	⑦ HUNTSBURG CEMETERY		
② AMISH SCHOOL	⑧ UNITED STATES POST OFFICE		
③ AMISH SCHOOL	⑨ TOWN HALL		
④ HUNTSBURG BAPTIST CH.	⑩		
⑤ HUNTSBURG CONGREGATIONAL CH.	○		
⑥ HUNTSBURG CEMETERY	○		

INDEX MAP OF  
**HUNTSBURG TOWNSHIP**  
 GEauga COUNTY, OHIO

MONTVILLE TOWNSHIP

TOWNSHIP

CLARIDON



JAN 1, 1992

A	B	C	D
E	F	G	H
I	J	K	L
M	N	O	P

HUNTSBURG TWP

RELATIVE REPRESENTATION

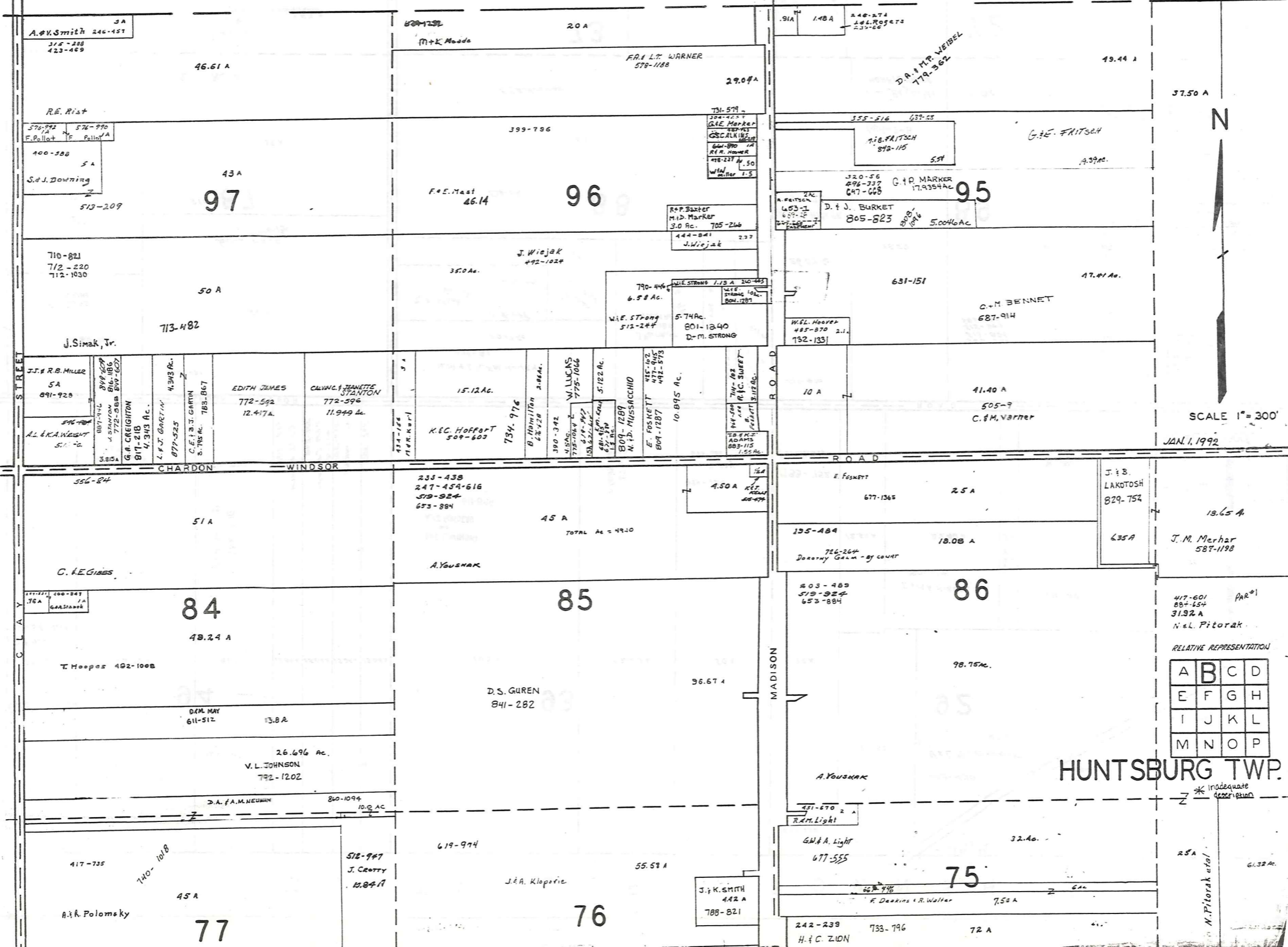
150 - Map 504  
E. PILARCZYK  
615-1091  
5.09 AC

\* Inadequate description

Match Line

MONTVILLE

TOWNSHIP



SCALE 1" = 300'

JAN. 1, 1992

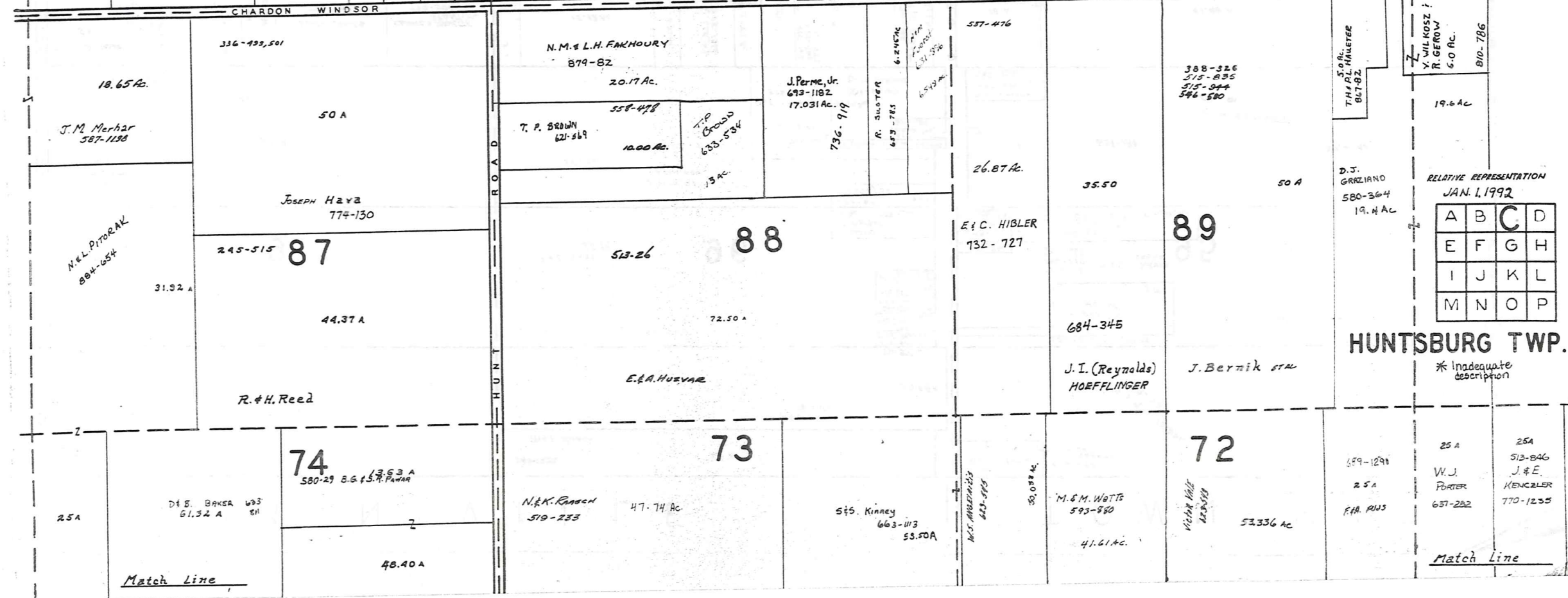
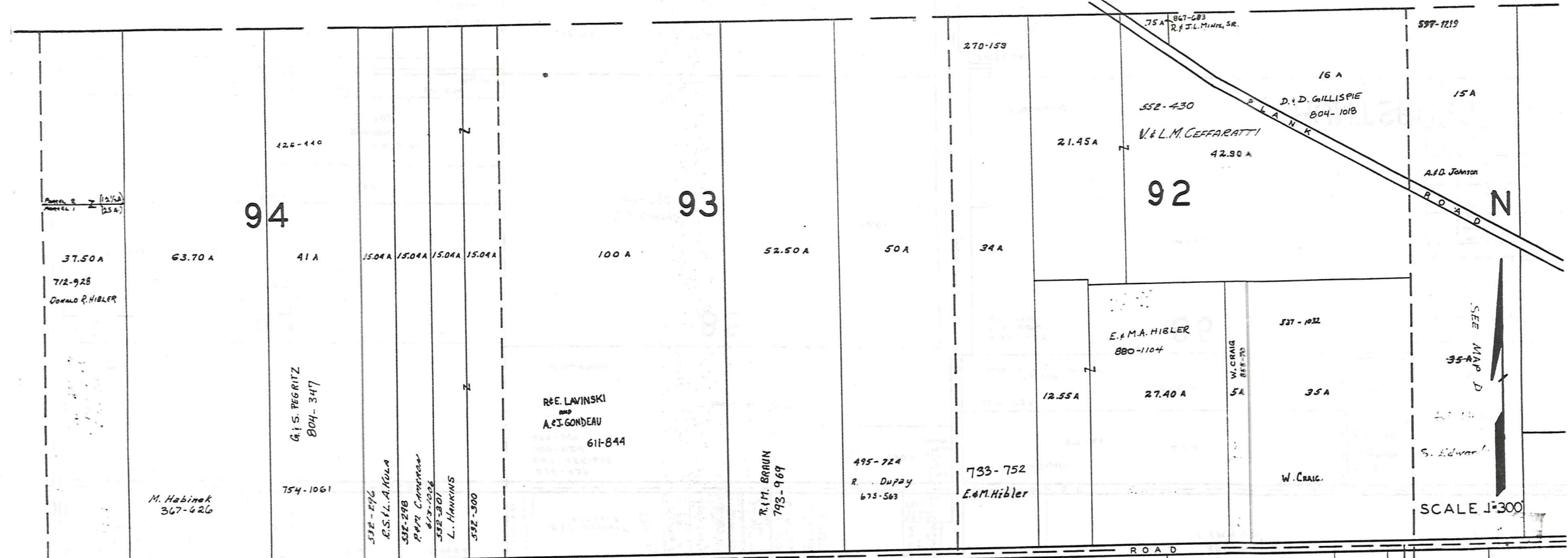
RELATIVE REPRESENTATION

A	B	C	D
E	F	G	H
I	J	K	L
M	N	O	P

HUNTSBURG TWP.

\* Inadequate description

MONTVILLE TOWNSHIP



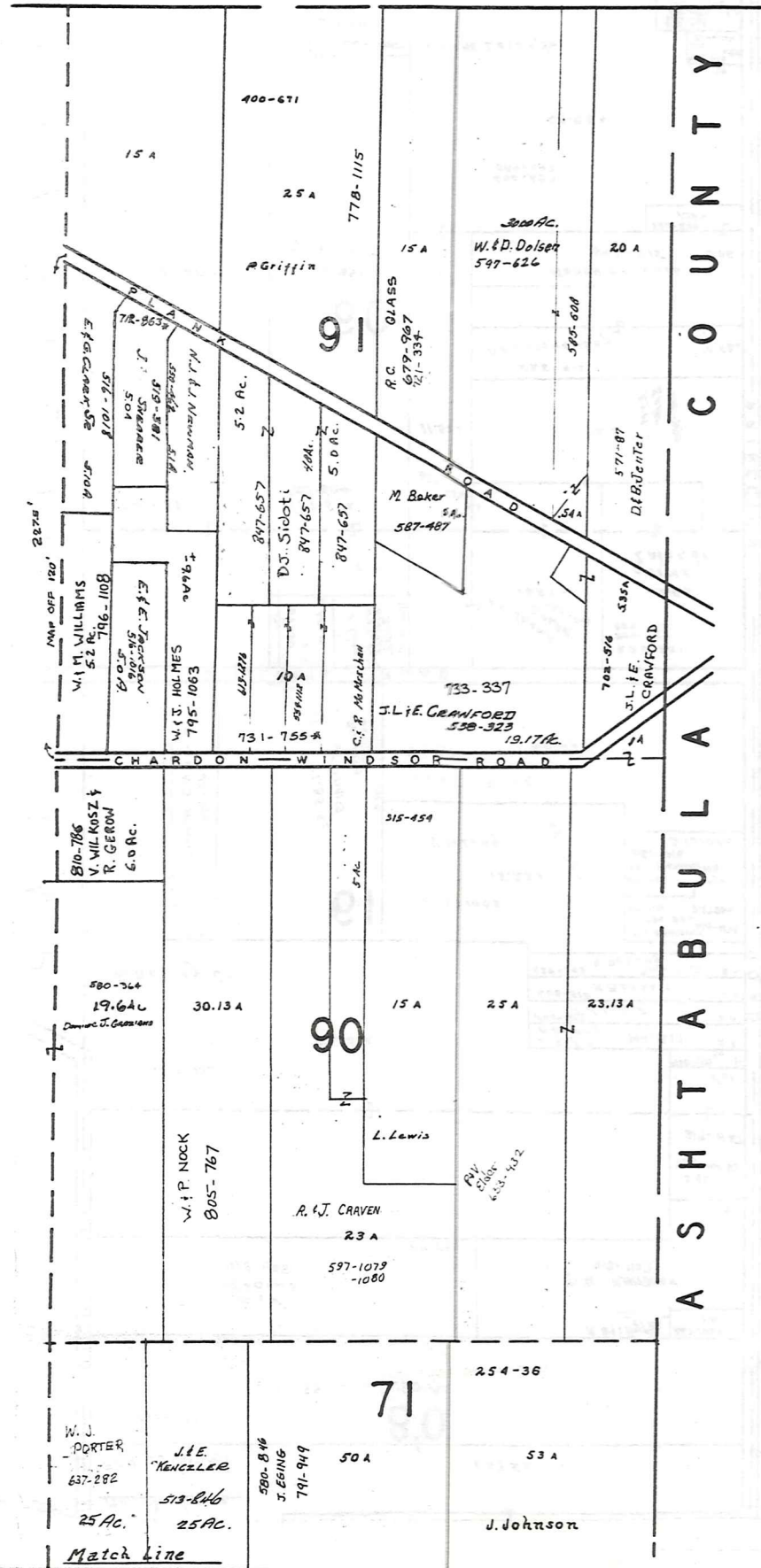
RELATIVE REPRESENTATION  
JAN. 1, 1992

A	B	C	D
E	F	G	H
I	J	K	L
M	N	O	P

HUNTSBURG TWP.

\* Inadequate description

MONTVILLE TWP.



A S H T A B U L A C O U N T Y



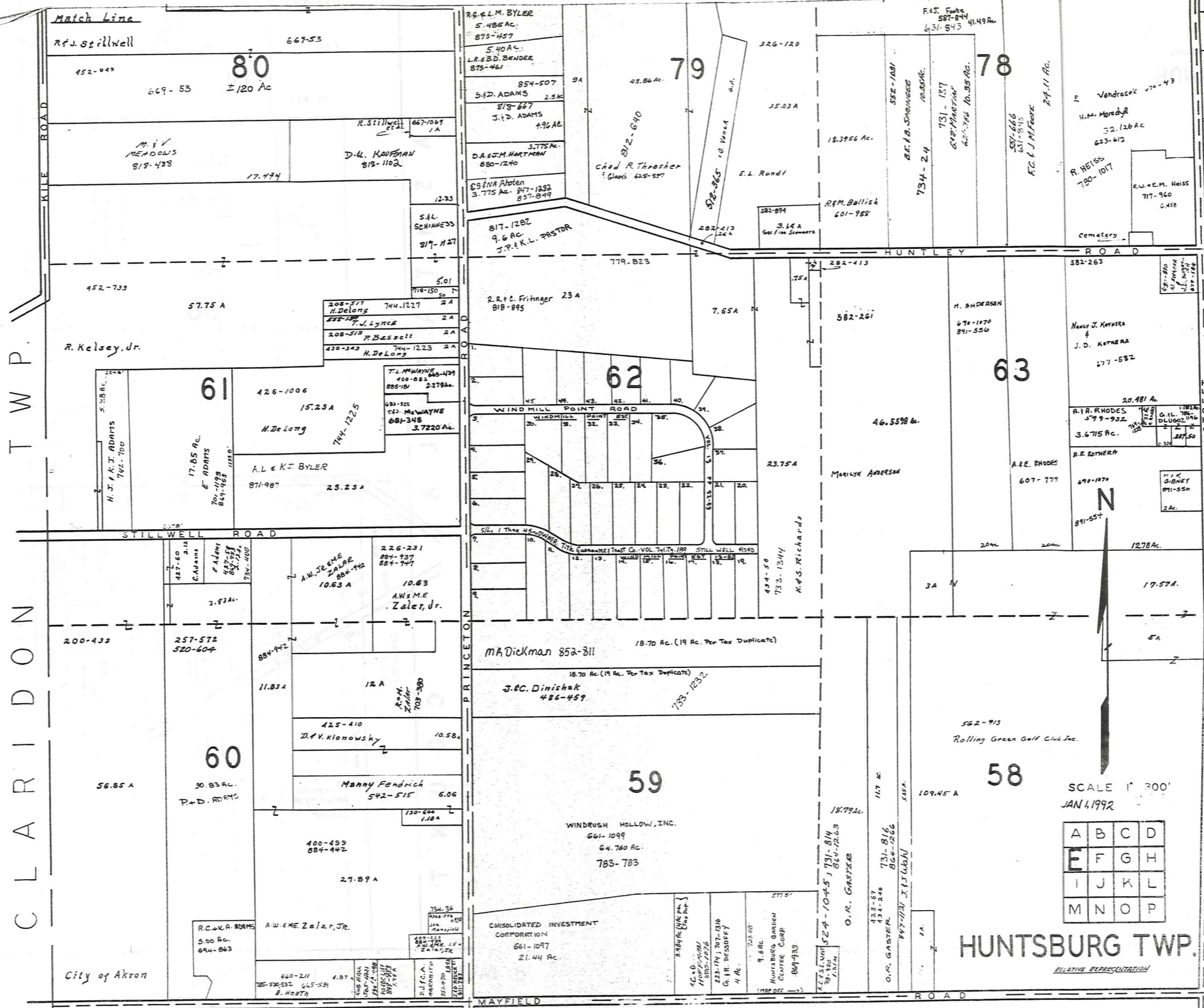
SCALE 1"=300'

JAN. 1, 1992

\* Inadequate description

A	B	C	D
E	F	G	H
I	J	K	L
M	N	O	P

HUNTSBURG TWP.  
RELATIVE REPRESENTATION



CLARIDON TWP.

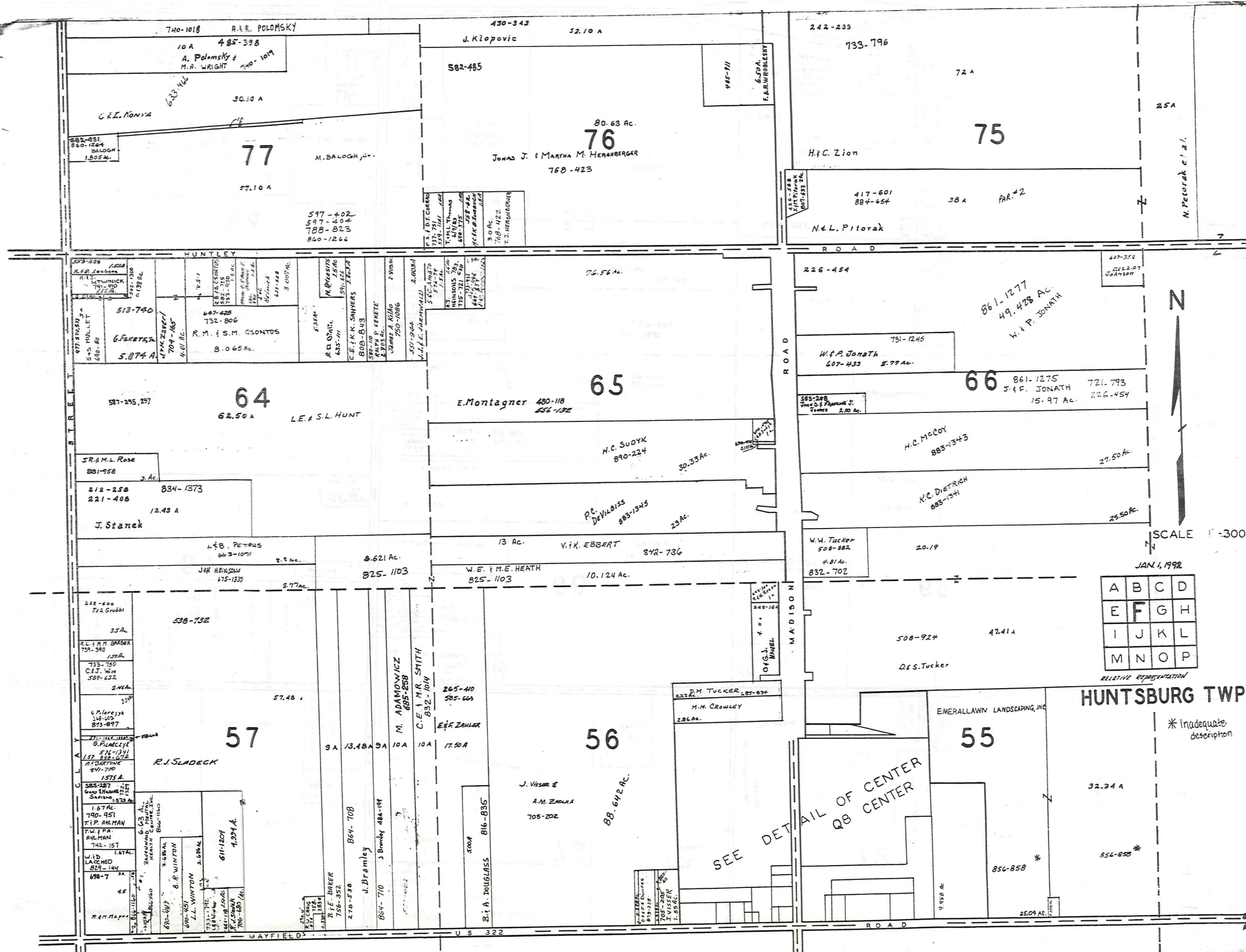
Match Line  
 R.F.J. Stillwell  
 452-440  
 669-53  
 17.494  
 452-733  
 57.75 A  
 R. Kelsey, Jr.  
 426-1006  
 15.23 A  
 H. De Long  
 17.85 Ac.  
 F. ADAMS  
 701-1128  
 809-983  
 1035 B  
 1744-1225  
 3.7220 Ac.  
 A.L. & K.J. BYLER  
 871-987  
 23.23 A  
 200-433  
 257-572  
 520-604  
 3.93 Ac.  
 56.85 A  
 30.83 Ac.  
 P. & D. ADAMS  
 200-433  
 257-572  
 520-604  
 3.93 Ac.  
 56.85 A  
 30.83 Ac.  
 P. & D. ADAMS  
 City of Akron

Match Line  
 268  
 326-120  
 35.03 A  
 18.3956 Ac.  
 582-261  
 46.5598 Ac.  
 23.75 A  
 434-58  
 733-1344  
 K. & S. Richards  
 18.70 Ac. (19 Ac. Per Tax Duplicate)  
 18.70 Ac. (19 Ac. Per Tax Duplicate)  
 17.57 A  
 5A  
 12.78 Ac.  
 582-913  
 Rolling Green Golf Club, Inc.  
 109.45 A  
 58  
 59  
 78  
 79  
 80  
 HUNTSBURG TWP.  
 RELATIVE REPRESENTATION

SCALE 1" = 200'  
 JAN 1, 1992

A	B	C	D
E	F	G	H
I	J	K	L
M	N	O	P

\* Inadequate description

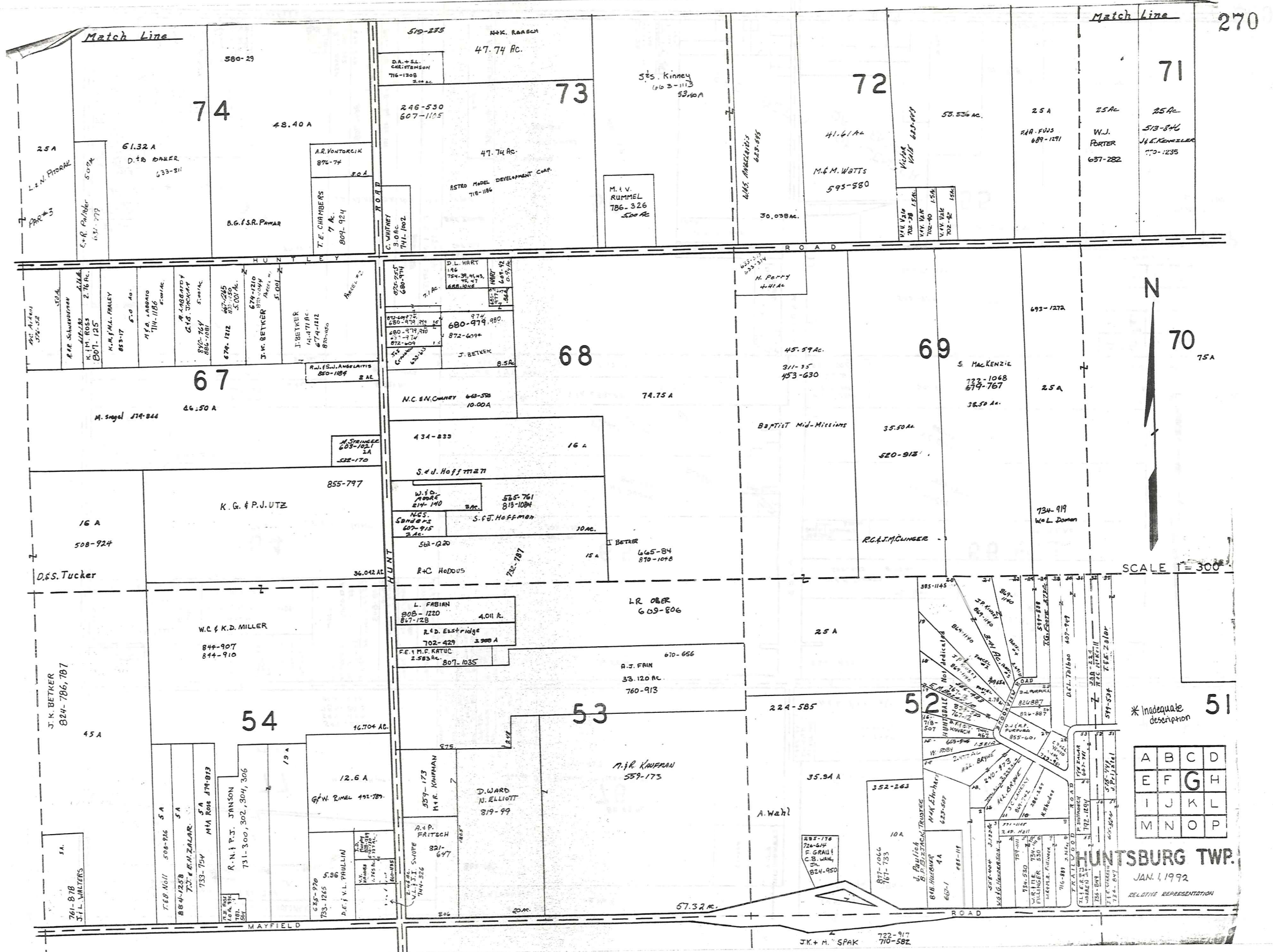


A	B	C	D
E	F	G	H
I	J	K	L
M	N	O	P

RELATIVE REPRESENTATION

**HUNTSBURG TWP.**

\* Inadequate description



Match Line 270

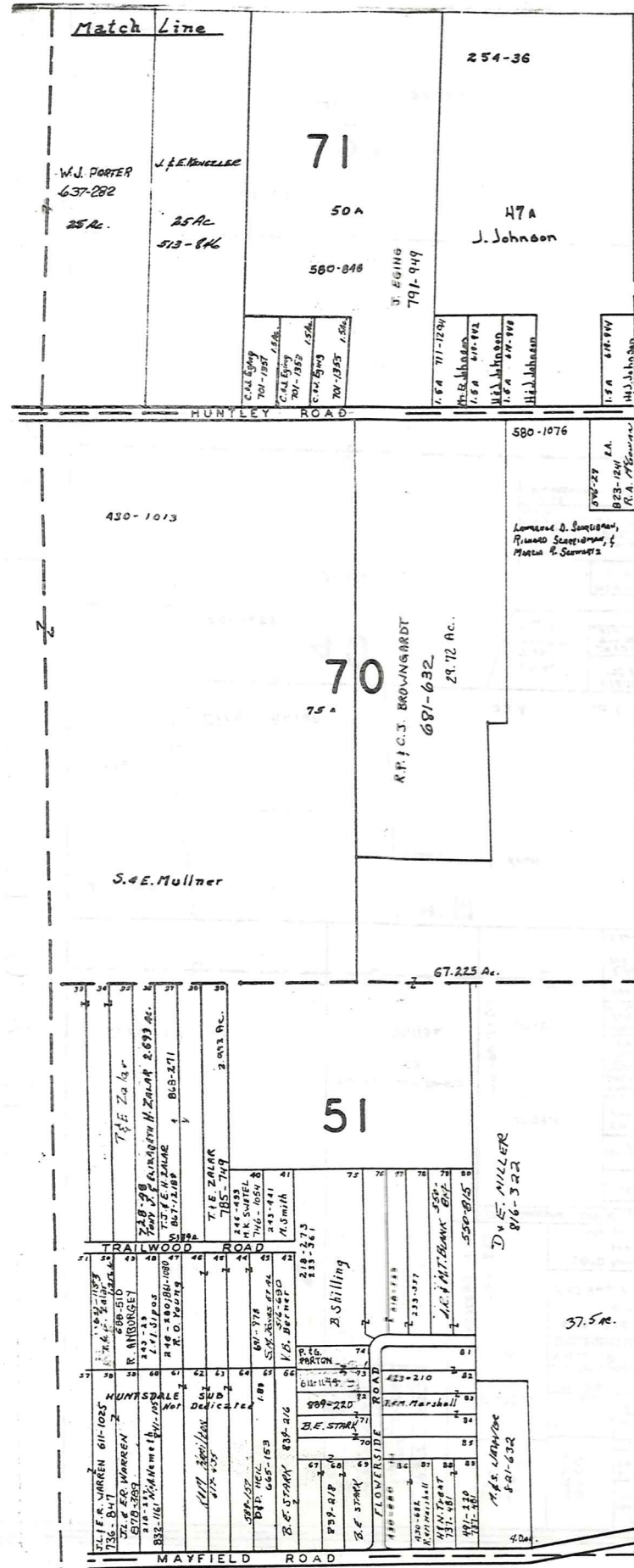


SCALE 1" = 300'

\* Inadequate description

A	B	C	D
E	F	G	H
I	J	K	L
M	N	O	P

HUNTSBURG TWP.  
JAN. 1, 1992  
RELATIVE REPRESENTATION



A S H T A B U L A C O U N T Y



\* Inadequate description

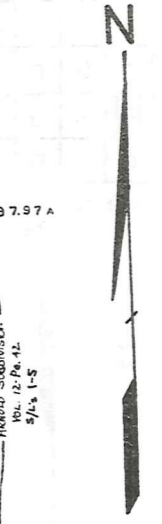
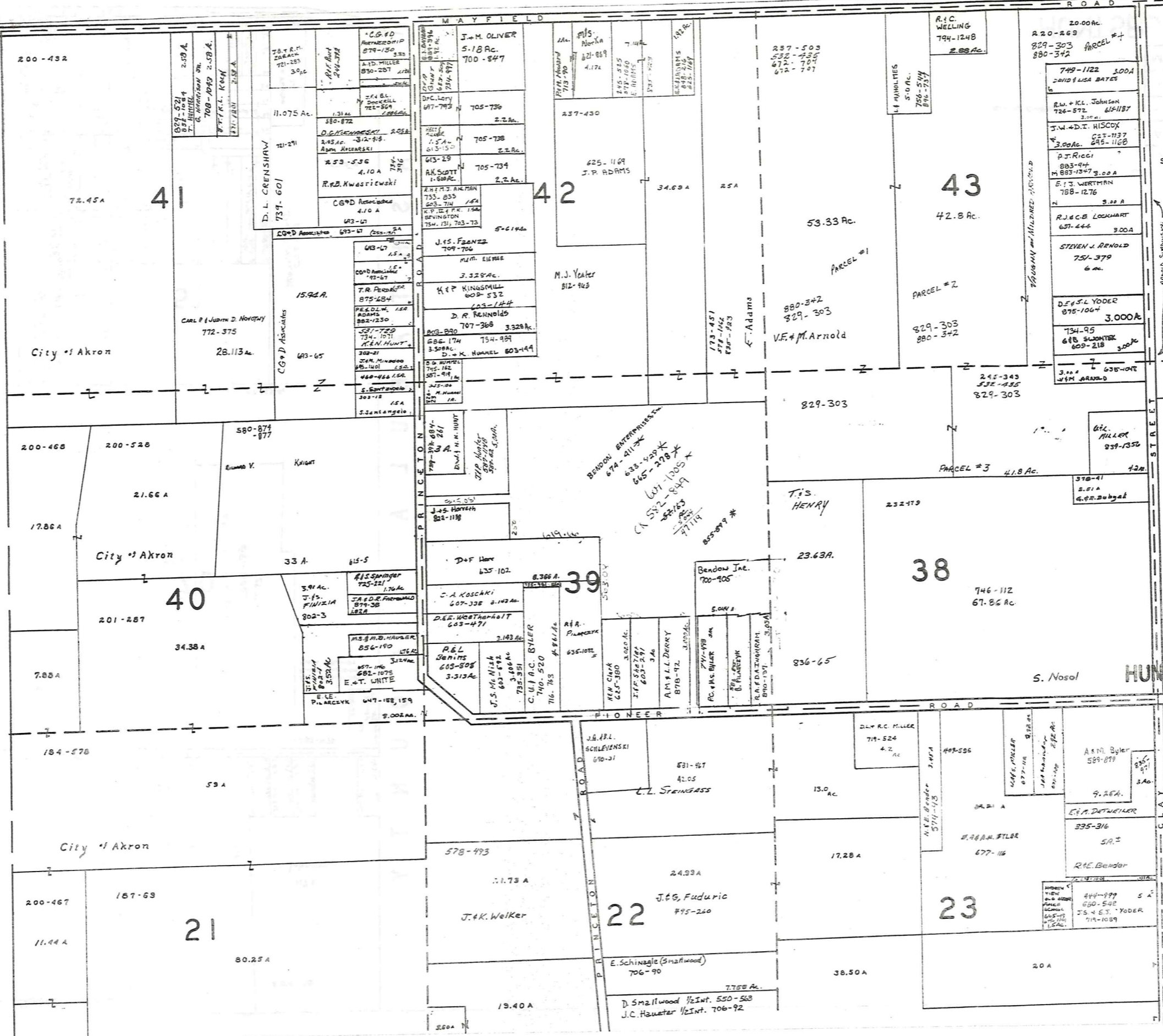
JAN 1, 1992  
Scale 1" = 300'

A	B	C	D
E	F	G	H
I	J	K	L
M	N	O	P

RELATIVE REPRESENTATION

HUNTSBURG TWP.

CLARIDON TOWNSHIP

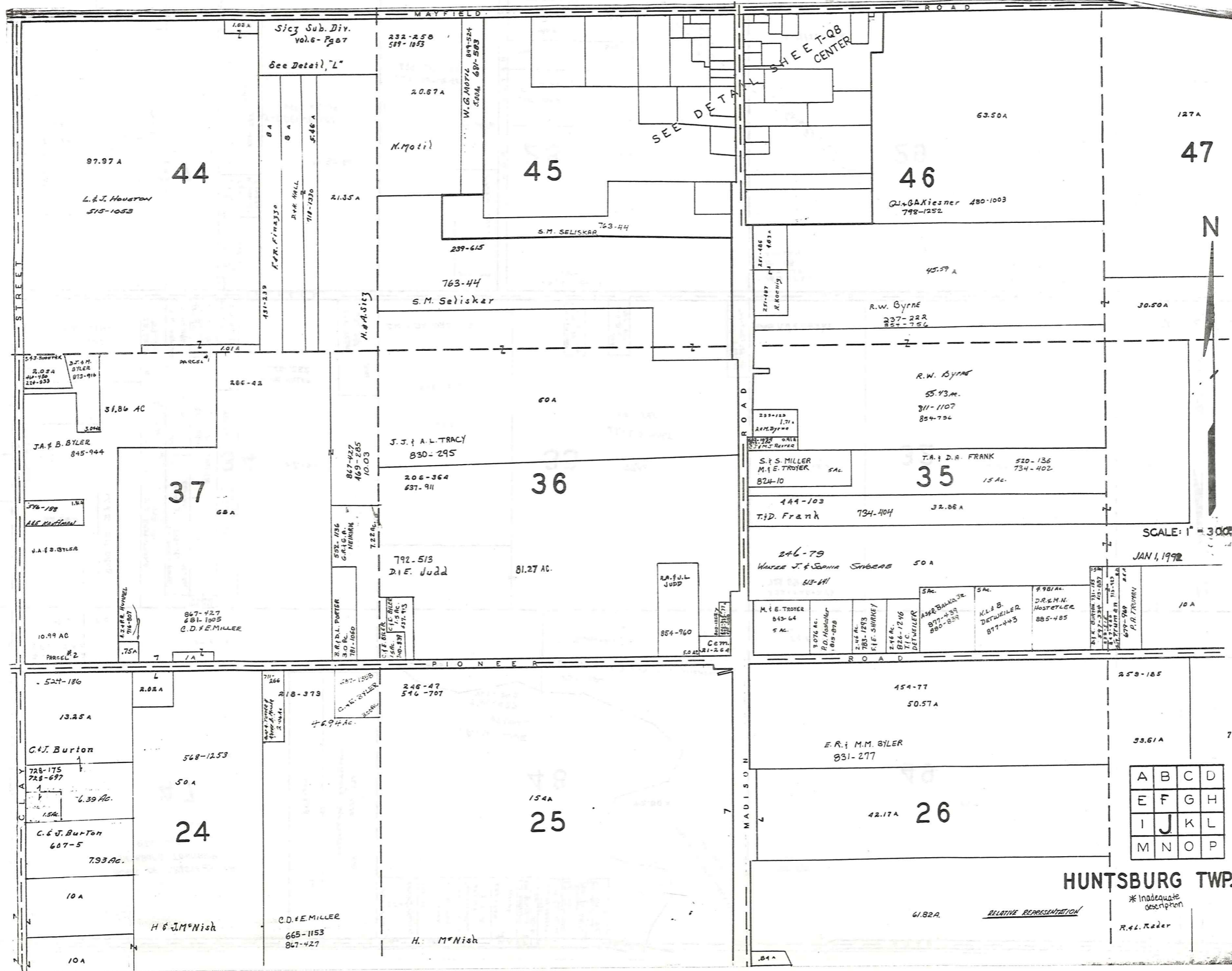


SCALE 1"=300'  
JAN 1, 1992  
RELATIVE REPRESENTATION

A	B	C	D
E	F	G	H
I	J	K	L
M	N	O	P

\* Inadequate description

15.25 A  
14 A  
10 A  
10 A



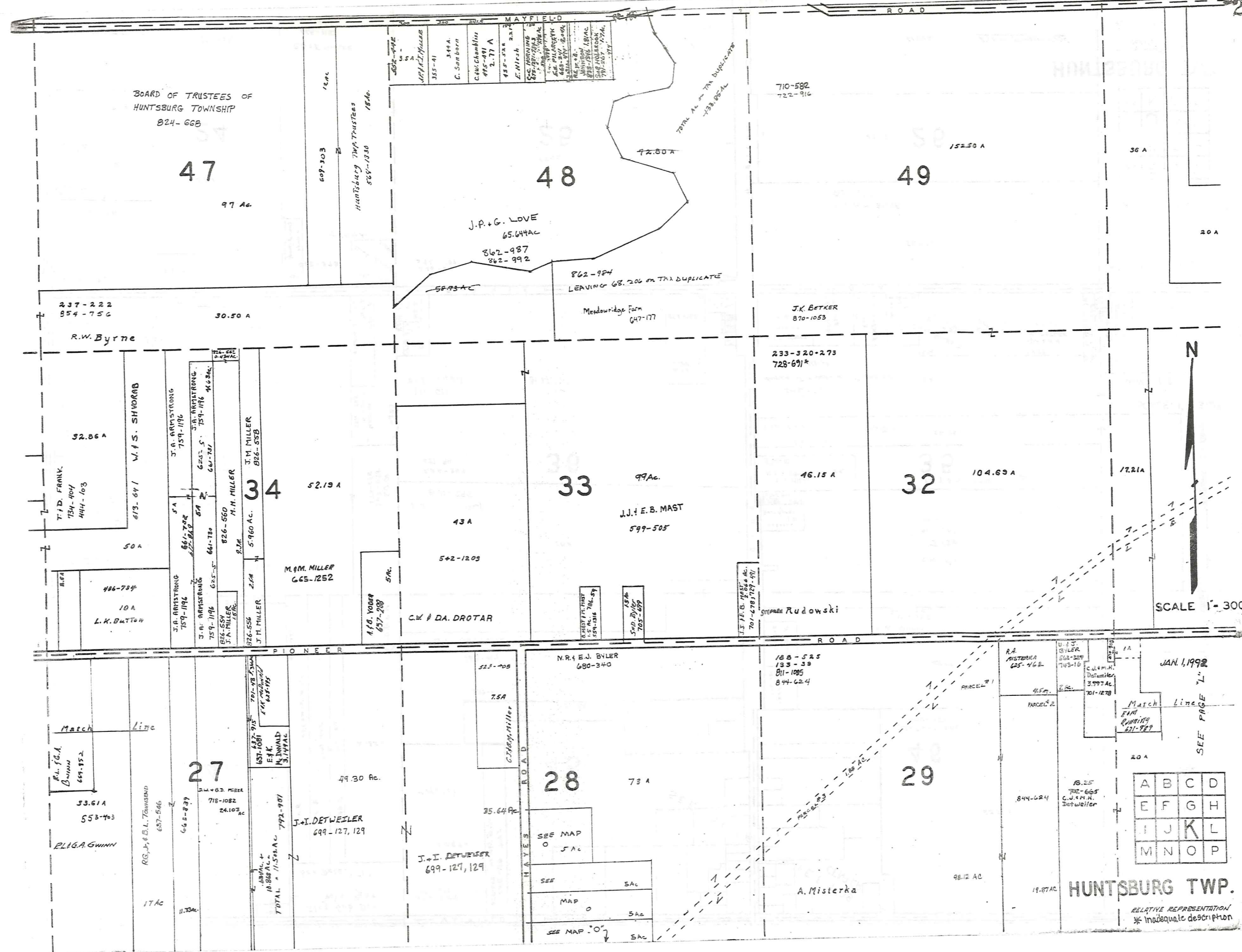
SCALE: 1" = 300'

JAN 1, 1992

A	B	C	D
E	F	G	H
I	J	K	L
M	N	O	P

**HUNTSBURG TWP.**

\* Inadequate description  
R. & L. Keder



BOARD OF TRUSTEES OF  
HUNTSBURG TOWNSHIP  
824-668

47  
97 Ac

48  
J.P. & G. LOVE  
65.644AC  
862-987  
862-992

49  
152.50 A

237-222  
854-756

30.50 A

R.W. Byrne

32.86 A

T. D. FAMILY.  
734-404  
444-103

W.F.S. SHVORAB  
613-641

J.A. ARMSTRONG  
759-1196

J.A. ARMSTRONG  
6207 S. 159-116 46.23AC

J.M. MILLER  
826-556

M.M. MILLER  
665-1252

52.19 A

J.M. MILLER  
826-556

J.M. MILLER  
826-556

J.M. MILLER  
826-556

J.M. MILLER  
826-556

J.M. MILLER  
826-556

J.M. MILLER  
826-556

J.M. MILLER  
826-556

J.M. MILLER  
826-556

J.M. MILLER  
826-556

J.M. MILLER  
826-556

J.M. MILLER  
826-556

J.M. MILLER  
826-556

J.M. MILLER  
826-556

J.M. MILLER  
826-556

J.M. MILLER  
826-556

J.M. MILLER  
826-556

J.M. MILLER  
826-556

J.M. MILLER  
826-556

J.M. MILLER  
826-556

J.M. MILLER  
826-556

J.M. MILLER  
826-556

J.M. MILLER  
826-556

J.M. MILLER  
826-556



SCALE 1" = 300'

Match Line

Match Line

Match Line

Match Line

Match Line

Match Line

27  
49.30 Ac

28  
73 A

29  
98.12 AC

53.61 A  
553-403

PLIG.A. GWINN

17 AC

11.32 AC

17 AC

J.I. DETWEILER  
699-127, 129

J.I. DETWEILER  
699-127, 129

J.I. DETWEILER  
699-127, 129

J.I. DETWEILER  
699-127, 129

J.I. DETWEILER  
699-127, 129

J.I. DETWEILER  
699-127, 129

SEE MAP  
0 5 AC

SEE MAP  
0 5 AC

SEE MAP  
0 5 AC

SEE MAP  
0 5 AC

SEE MAP  
0 5 AC

188-525  
133-39  
811-1085  
844-624

A. MISTERKA

R.A. MISTERKA  
625-462

PARCEL 2

19.87 AC

844-624

19.87 AC

19.87 AC

19.87 AC

JAN. 1, 1992

Match Line

Match Line

Match Line

Match Line

Match Line

Match Line

Match Line

Match Line

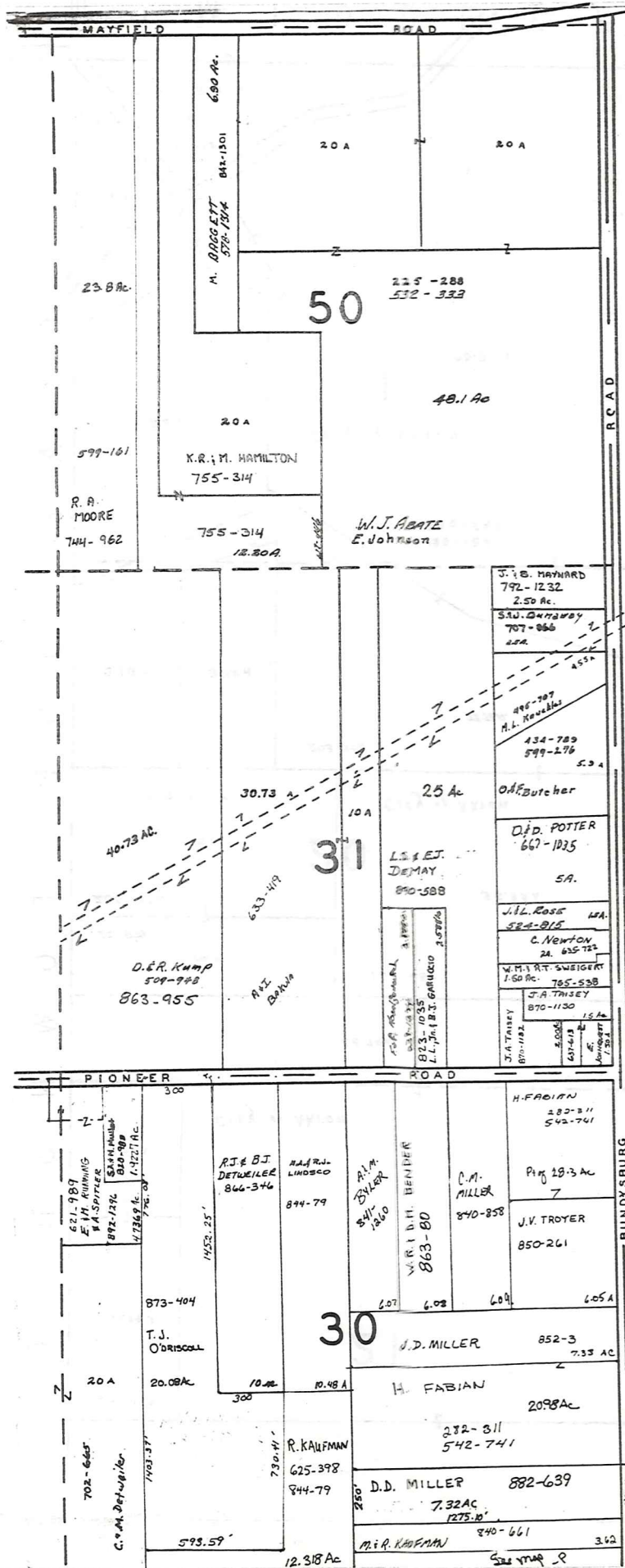
Match Line

Match Line

A	B	C	D
E	F	G	H
I	J	K	L
M	N	O	P

HUNTSBURG TWP.

RELATIVE REPRESENTATION  
\* Inadequate description



A S H T A B U L A  
 C O U N T Y

MAYFIELD ROAD US 322							
1	2	3	4	5	6	7	8
1.08 A	1 A	1 A	1 A	.60 A	1 A	1 A	1.13 A
403-331 655-111 F.A.B. STON	437-239 C.F.R. FINN 330	885-498 H. Keyes et al.	D.H. HILL	1.90			

SICZ SUBDIVISION  
 VOL. 6 PG. 87  
 LOT 44  
 SCALE 1" = 100'



SCALE 1" = 300'

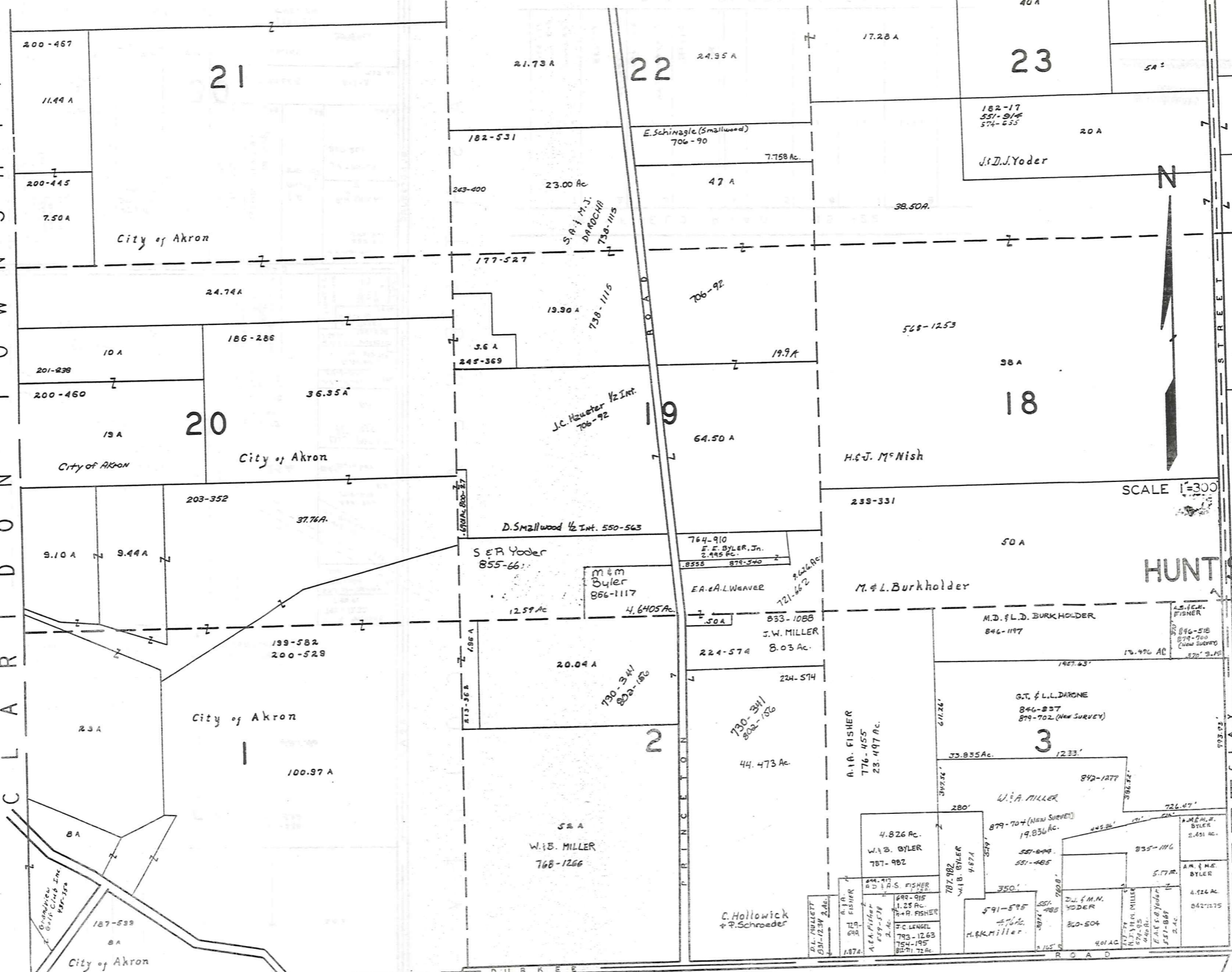
JAN 1, 1992

\* Inadequate  
 description  
 RELATIVE REPRESENTATION

A	B	C	D
E	F	G	H
I	J	K	L
M	N	O	P

HUNTSBURG TWP.

C L A R I D O N T O W N S H I P



A	B	C	D
E	F	G	H
I	J	K	L
M	N	O	P

SCALE 1"=300'

HUNT SBURG TWP

RELATIVE REPRESENTATION

JAN 1, 1992

64.21 A

552-1199

31.75 A

4.926 AC

042-1215

1874

200-529

187-539

100.97 A

23.00 AC

19.90 A

17.28 A

24.95 A

21.73 A

11.44 A

7.50 A

200-445

200-457

200-445

200-457

200-445

200-457

200-445

200-457

200-445

200-457

200-445

200-457

200-445

200-457

200-445

200-457

200-445

200-457

200-445

200-457

200-445

200-457

200-445

200-457

200-445

200-457

200-445

200-457

200-445

200-457

200-445

200-457

200-445

200-457

200-445

200-457

200-445

200-457

200-445

200-457

200-445

200-457

200-445

200-457

200-445

200-457

200-445

200-457

200-445

200-457

200-445

200-457

200-445

200-457

200-445

200-457

200-445

200-457

200-445

200-457

200-445

200-457

200-445

200-457

200-445

200-457

200-445

200-457

200-445

200-457

200-445

200-457

200-445

200-457

200-445

200-457

200-445

200-457

200-445

200-457

200-445

200-457

200-445

200-457

200-445

200-457

200-445

200-457

200-445

200-457

200-445

200-457

200-445

200-457

200-445

200-457

200-445

200-457

200-445

200-457

200-445

200-457

200-445

200-457

200-445

200-457

200-445

200-457

200-445

200-457

200-445

200-457

200-445

200-457

200-445

200-457

200-445

200-457

200-445

200-457

200-445

200-457

200-445

200-457

200-445

200-457

200-445

200-457

200-445

200-457

200-445

200-457

200-445

200-457

200-445

200-457

200-445

200-457

200-445

200-457

200-445

200-457

200-445

200-457

200-445

200-457

200-445

200-457

200-445

200-457

200-445

200-457

200-445

200-457

200-445

200-457

200-445

200-457

200-445

200-457

200-445

200-457

200-445

200-457

200-445

200-457

200-445

200-457

200-445

200-457

200-445

200-457

200-445

200-457

200-445

200-457

200-445

200-457

200-445

200-457

200-445

200-457

200-445

200-457

200-445

200-457

200-445

200-457

200-445

200-457

200-445

200-457

200-445

200-457

200-445

200-457

200-445

200-457

200-445

200-457

200-445

200-457

200-445

200-457

200-445

200-457

200-445

200-457

200-445

200-457

200-445

200-457

200-445

200-457

200-445

200-457

200-445

200-457

200-445

200-457

200-445

200-457

200-445

200-457

200-445

200-457

200-445

200-457

200-445

200-457

200-445

200-457

200-445

200-457

200-445

200-457

200-445

200-457

200-445

200-457

200-445

200-457

200-445

200-457

200-445

200-457

200-445

200-457

200-445

200-457

200-445

200-457

200-445

200-457

200-445

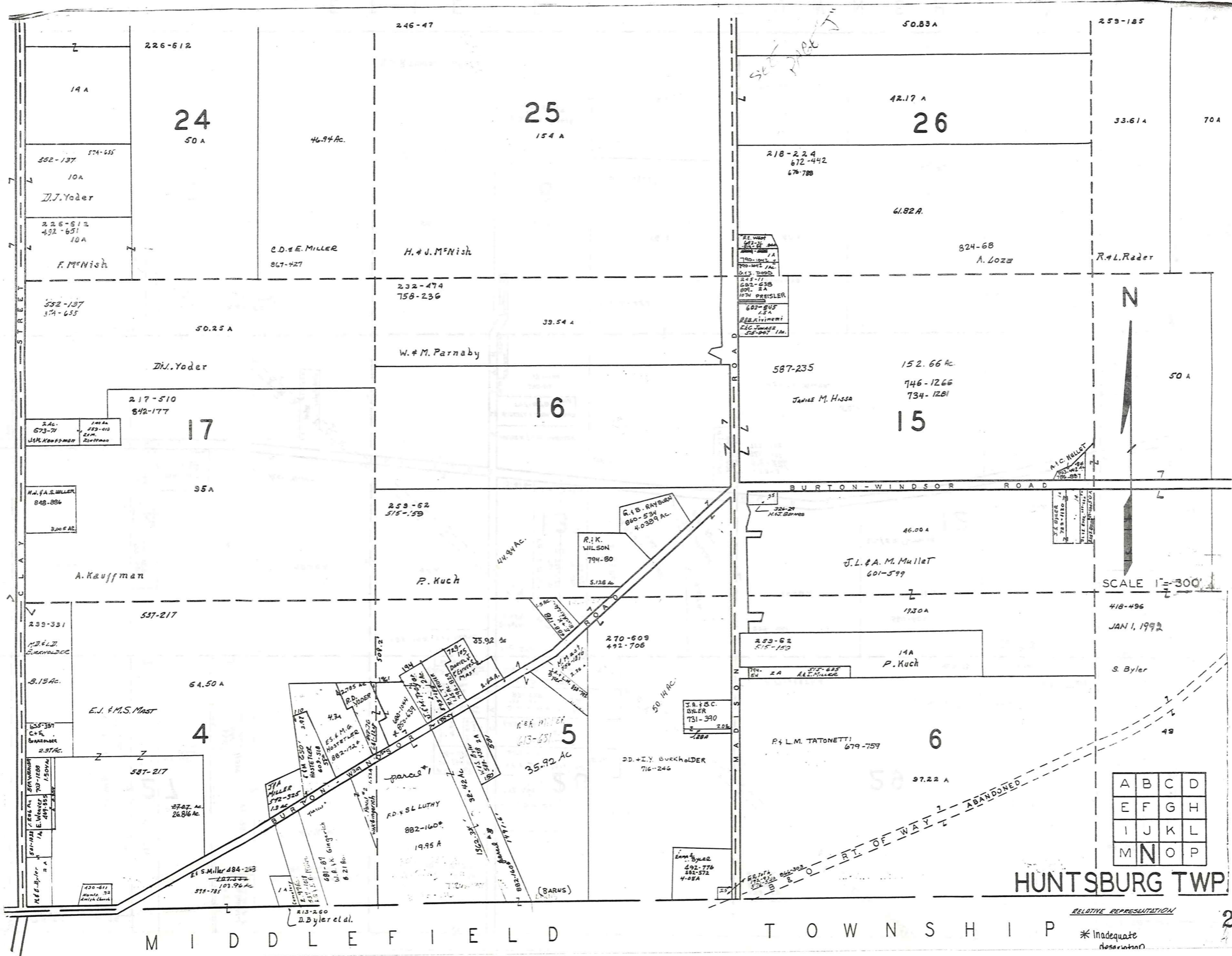
200-457

200-445

200-457

200-445

&lt;



M I D D L E F I E L D

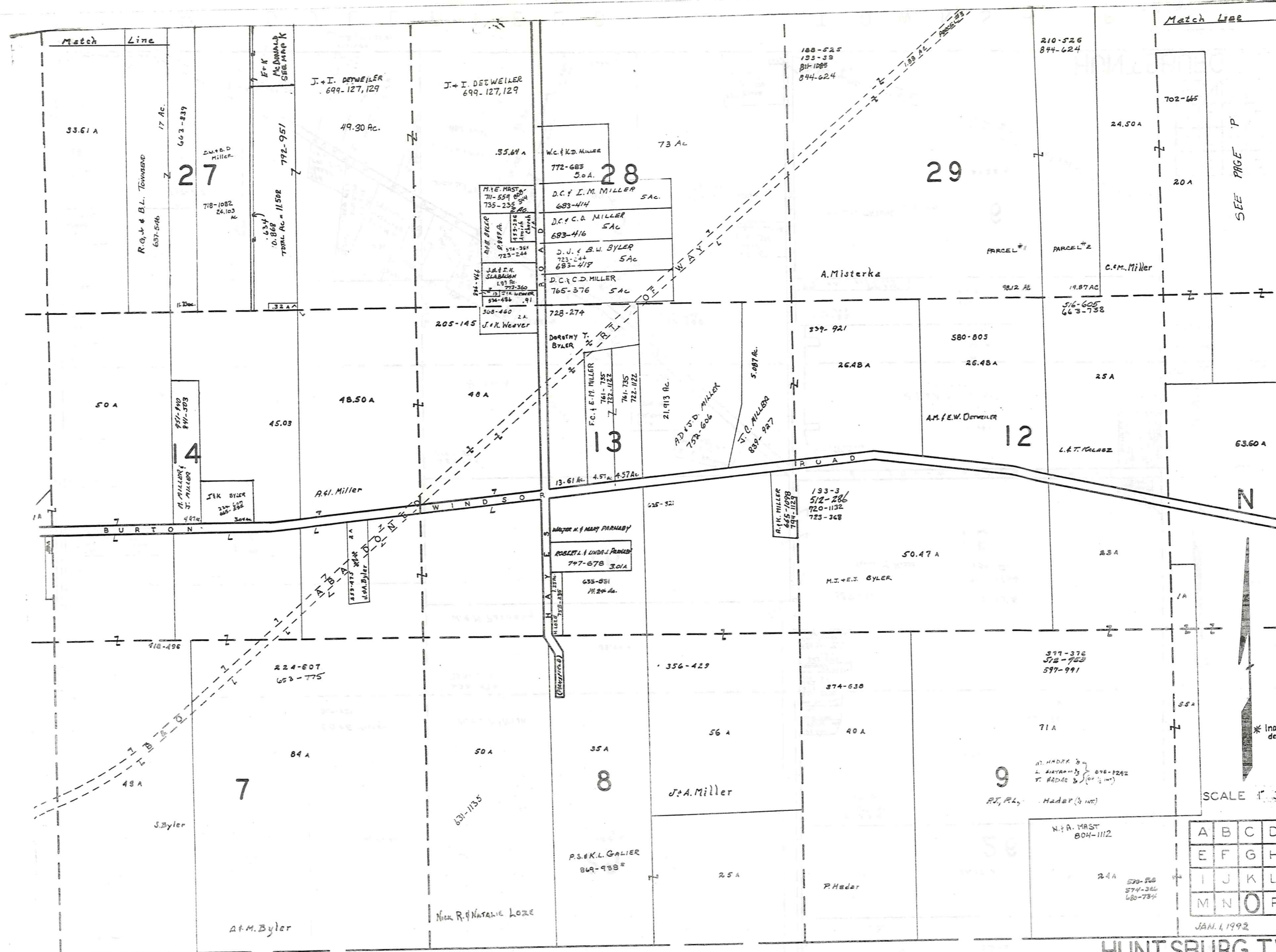
T O W N S H I P

HUNTSGBURG TWP

RELATIVE REPRESENTATION

\* Inadequate description

A	B	C	D
E	F	G	H
I	J	K	L
M	N	O	P



SEE PAGE 'P'

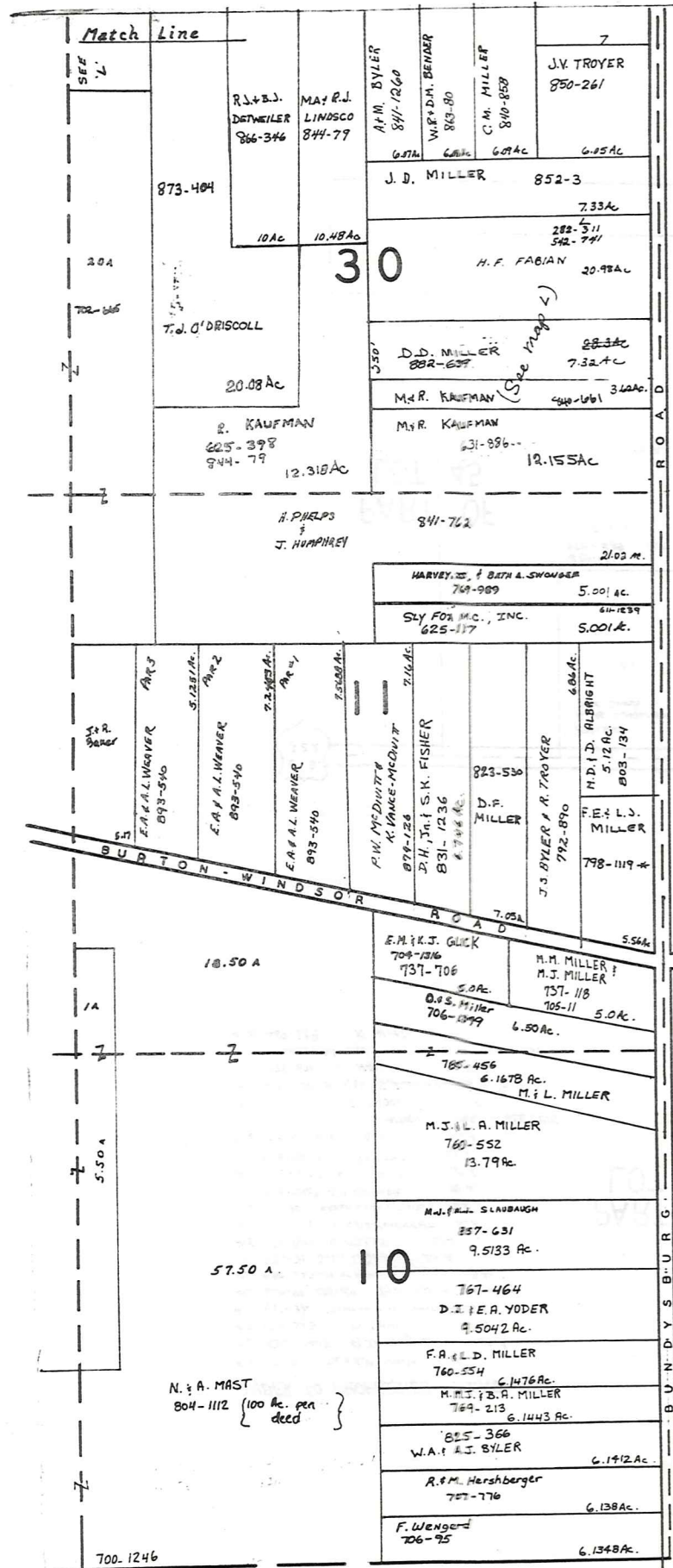
N

\* Inadequate description

SCALE 1" = 300'

A	B	C	D
E	F	G	H
I	J	K	L
M	N	O	P

JAN. 1, 1992



ASHTABULA COUNTY

MIDDLEFIELD TWP.



SCALE 1" = 300  
JAN 1, 1992

RELATIVE REPRESENTATION

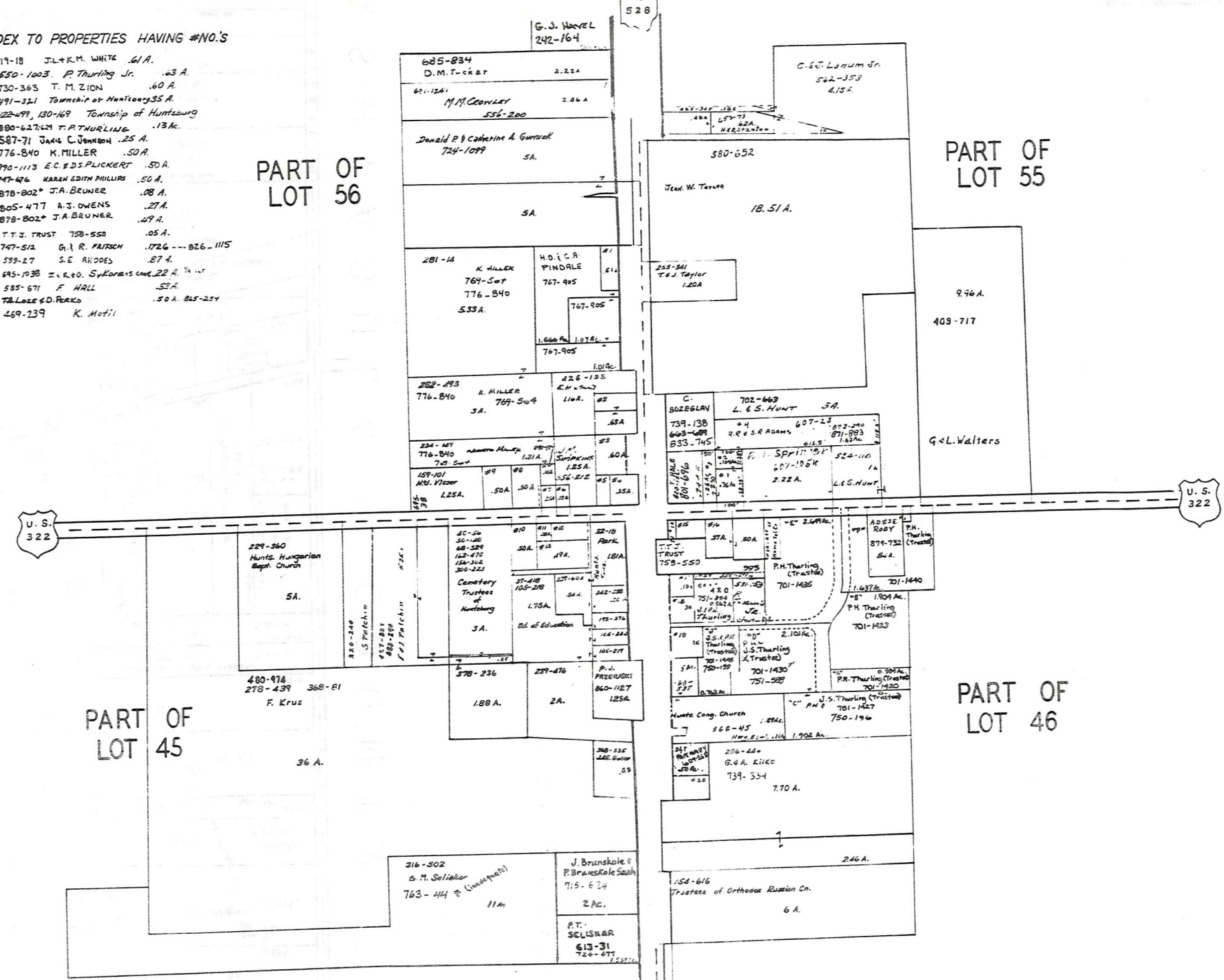
\* Inadequate description

A	B	C	D
E	F	G	H
I	J	K	L
M	N	O	P

HUNTSBURG TWP 279

# HUNTSBURG TP. CENTER

- INDEX TO PROPERTIES HAVING #NO.'S**
- #1 719-18 J.L. & K.M. WHITE .61 A.
  - #2 530-1003 P. Thurling Jr. .63 A.
  - #3 730-363 T. M. ZION .60 A.
  - #4 491-321 Township of Huntsburg .35 A.
  - #5 122-491, 130-169 Township of Huntsburg
  - #6 890-427629 T. R. THURLING .13 A.
  - #7 587-71 JAMES C. JENNISON .25 A.
  - #8 776-840 K. MILLER .50 A.
  - #9 990-1113 E.C. & D.S. PLICKERT .50 A.
  - #10 747-496 KAREN EDITH PHILLIPS .50 A.
  - #11 878-802 J.A. BRUNER .08 A.
  - #12 805-477 A.J. OWENS .27 A.
  - #13 878-802 J.A. BRUNER .49 A.
  - #14 T.T.S. TRUST 758-550 .05 A.
  - #15 747-512 G.A. R. PATSCH .1726 --- 826-1115
  - #16 599-27 S.E. RHODES .87 A.
  - #17 645-1938 I. & R. S. SYKORAKS cont. 22 A. 1/4 int
  - #18 585-671 F. HALL .53 A.
  - #19 T. & L. L. PERKO .50 A. 825-234
  - #20 469-239 K. Motil



JAN. 1, 1992  
SCALE: 1 in. = 200'

BEARING REPRESENTATION

\* Inadequate description

# Explanation and Use Sheet for Geauga County, Ohio

A

SAMPLE (PARTIAL) COUNTY INDEX MAP



Tract Lot Number

Acreage

Township Name

Village Boundary

Street Name

Village Name

Township Boundary

Owners Name

Denotes Continuous Ownership

Deed Book & Page

Map Page Number

Township Name

Village Name

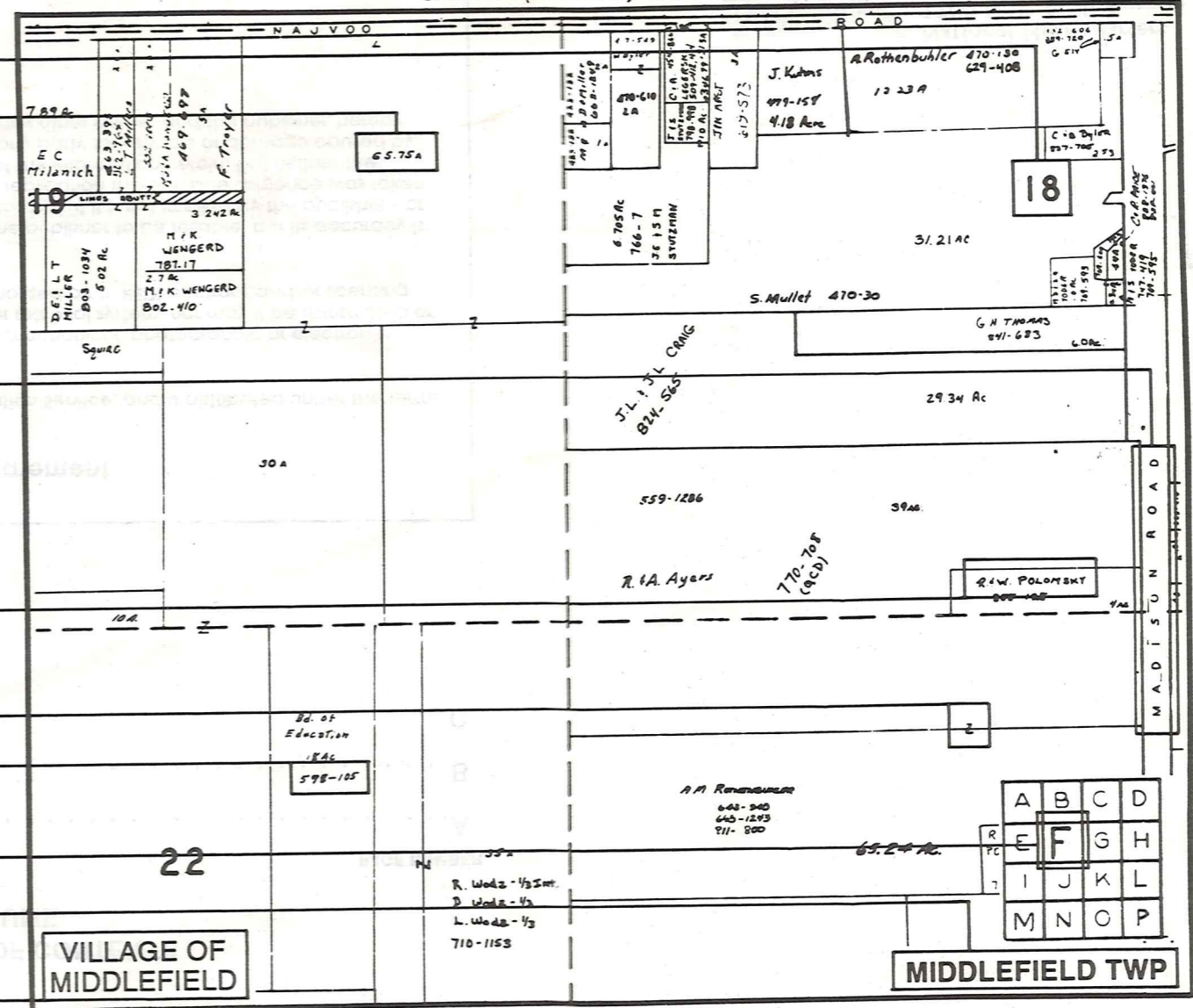
Village Boundary

Street Name

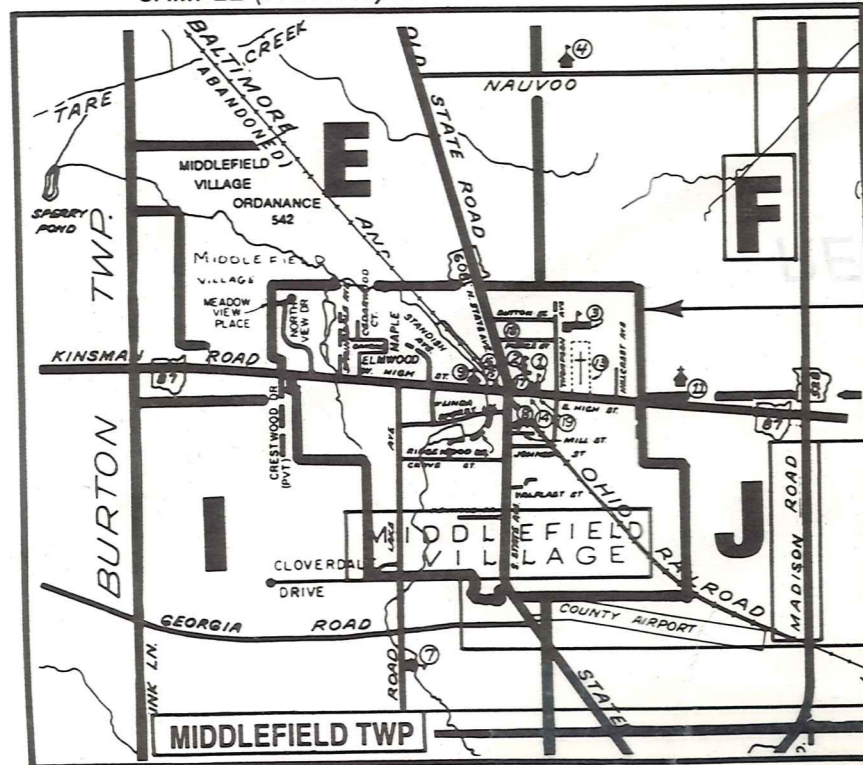
Village Name

Township Name

SAMPLE (PARTIAL) MAP PAGE



SAMPLE (PARTIAL) MUNICIPALITY INDEX MAP



## USE OF THE MAP VOLUME

- LOCATE THE GENERAL AREA OF INTEREST ON THE COUNTY INDEX MAP AND NOTE THE MUNICIPALITY NAME (TOWNSHIP OR VILLAGE).
  - REFER TO THE TABLE OF CONTENTS AND NOTE THE BEGINNING ATLAS PAGE NUMBER FOR THE MUNICIPALITY OF INTEREST.
  - TURN TO THE PAGE INDICATED, ON THIS PAGE WILL APPEAR AN INDEX MAP FOR THAT MUNICIPALITY.
  - LOCATE THE GENERAL AREA OF INTEREST AND NOTE THE MAP PAGE NUMBER. THIS MAY BE EITHER A LETTER OR A NUMBER.
  - MAP PAGES ARE IN ALPHABETICAL (OR NUMERICAL) SEQUENCE FOLLOWING THE MUNICIPALITY INDEX MAP. FOLLOW SEQUENCE TO THE MAP PAGE INDICATED.
  - LOCATE SPECIFIC PARCEL OF INTEREST AND NOTE THE DESIRED INFORMATION.
- NOTE: ON SOME MAPS YOU MAY BE REFERRED TO A DETAIL SHEET SHOWING AN ENLARGEMENT OF THE AREA. THESE MAPS ARE FOUND AT THE END OF THE REGULAR MAP PAGES IN EACH MUNICIPALITY IN EITHER ALPHABETICAL OR NUMERICAL SEQUENCE.
- NOTE: CHARDON VILLAGE HAS TITLE SHEETS. TO LOCATE OWNERS NAME, NOTE THE PARCEL NUMBER, REFER TO THE TITLE PAGE FOLLOWING THE MAP OF INTEREST, FOLLOW NUMERICAL SEQUENCE TO THE PARCEL NUMBER OF INTEREST AND NOTE THE DESIRED INFORMATION. IN ALL OTHER MUNICIPALITIES THE OWNERS NAME APPEARS ON THE MAP PAGE.